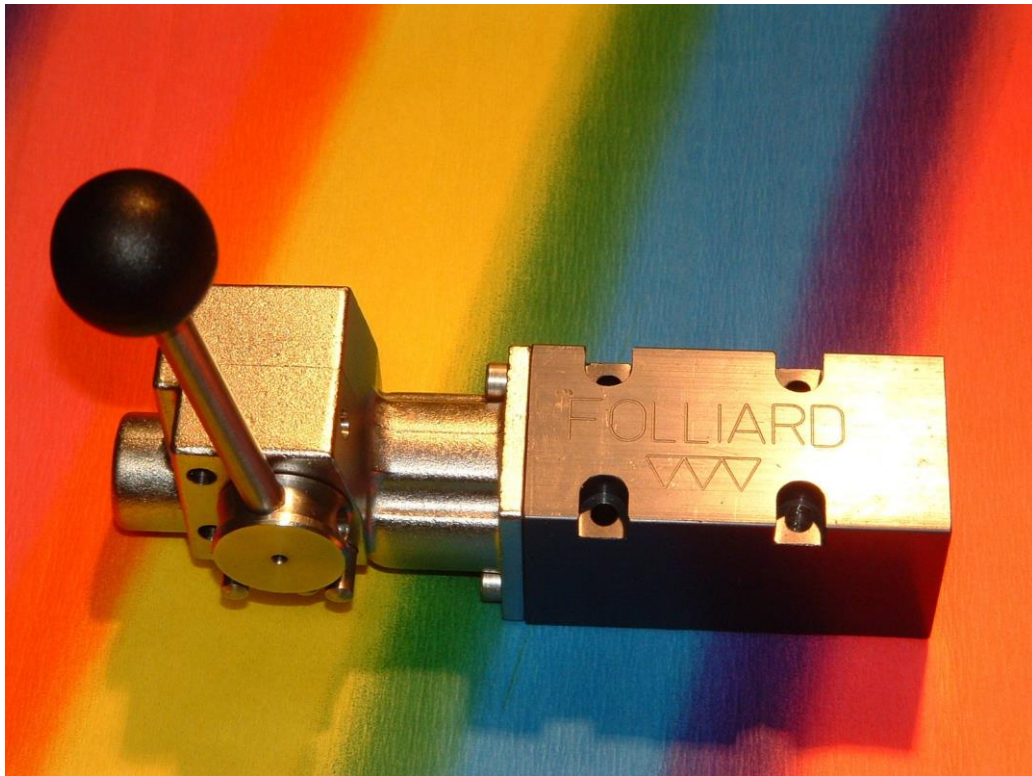
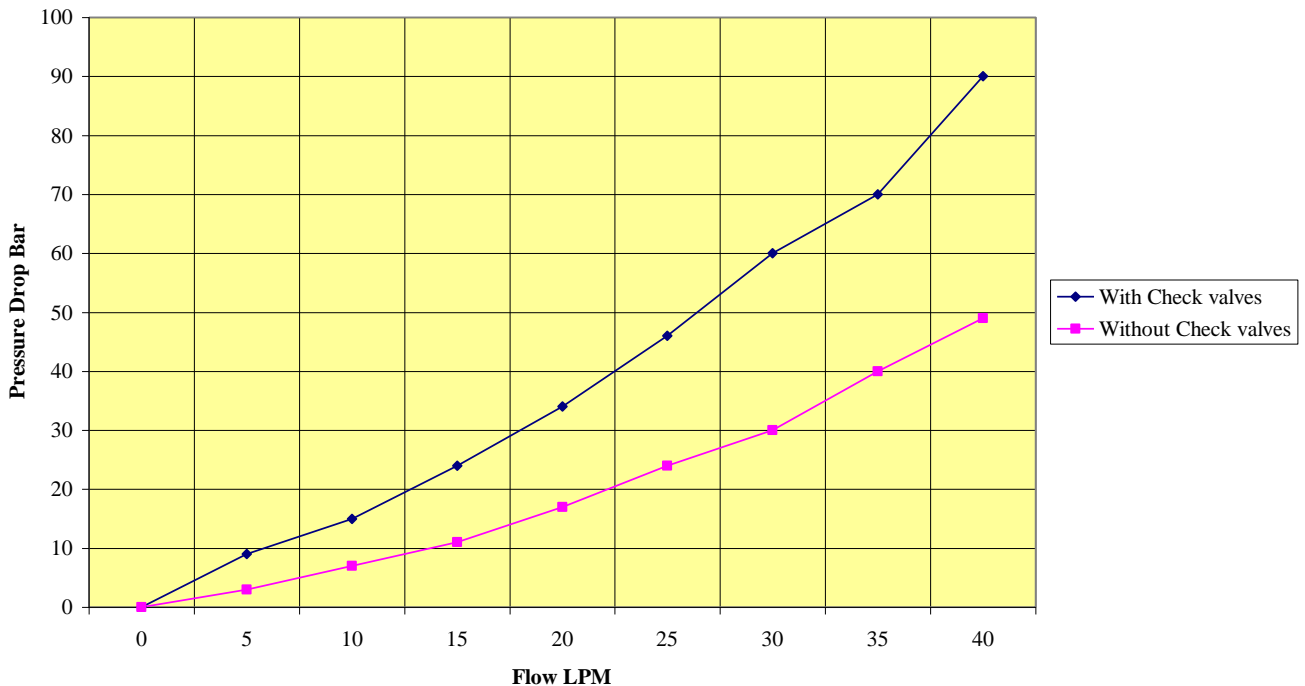
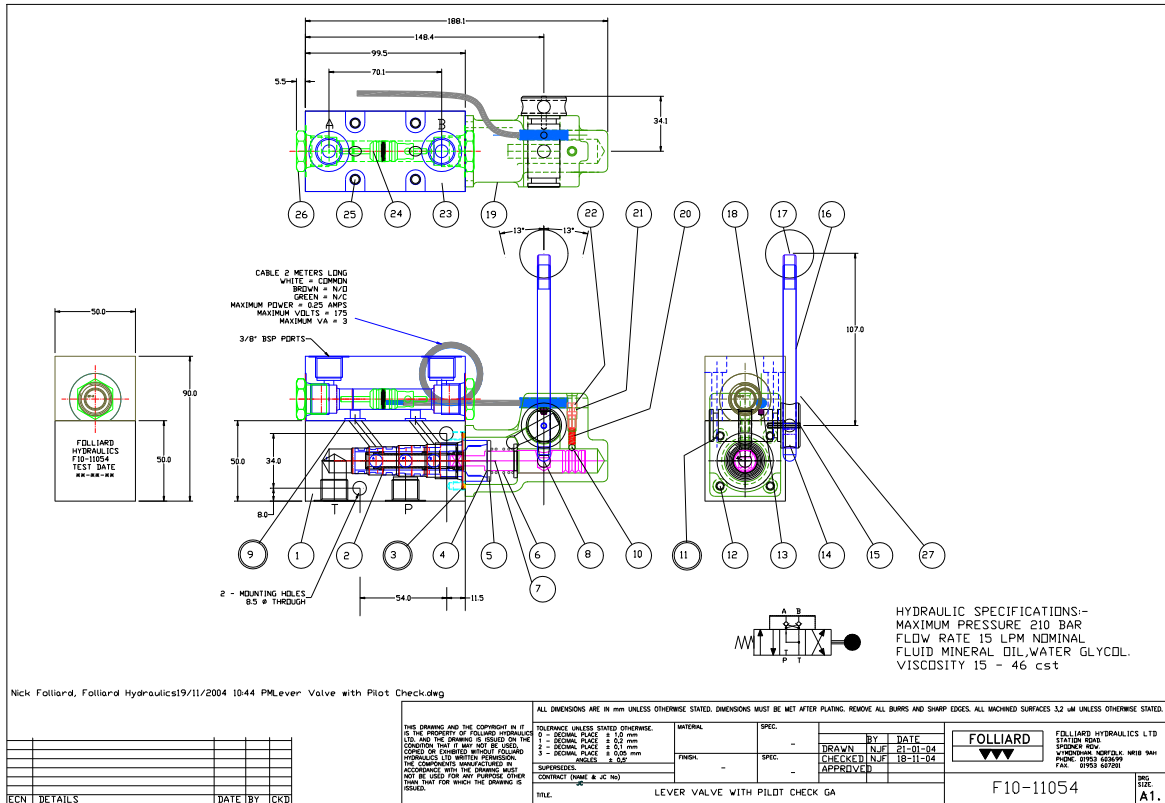


### General description

These valves are used mainly for the control of hydraulic cylinders and hydraulic motors. They are designed to be used in offshore and high humidity environments. All external materials are either 316 stainless steel or HE30TF aluminium alloy, anodised. The valves can be supplied in a CETOP 3, or as a pipe mounted version complete with pilot check valves. An integrated spool position sensor is available as an optional extra and the lever can be positioned vertically or horizontally.



	<b>With pilot check valves Pipe mounted version</b>	<b>without pilot check valves CETOP 3 version</b>
Maximum pressure Bar	Ports P,A,B <b>210</b> Bar	Port T <b>70</b> Bar
Temperature limits ° C	- <b>20</b> ° C to <b>100</b> ° C	
Hydraulic fluid	Mineral oil, Water/Glycol, Synthetic (with Viton reseal)	
Filtration (10µm filter )	ISO 4406 Class <b>14/12</b> or better	
Viscosity range	<b>15</b> cSt - <b>46</b> cSt	
Flow rate (nominal ) see graph	<b>15</b> LPM	<b>30</b> LPM
Weight	<b>0.25</b> Kg	<b>0.20</b> kg
Port size	<b>3/8"</b> BSP	-
<b>Electrical Data</b>		
Maximum voltage	<b>175</b> VAC /VDC	
Maximum current	<b>0.25</b> Amps	
Maximum VA	3	
Contacts	Change over	
Cable	2 meters long 3 core .White = <b>Common</b> , Brown = <b>N/O</b> , Green = <b>N/C</b>	



	<b>FOLLIARD HYDRAULICS LTD</b> <b>STATION RD, SPOONER ROW</b> <b>WYMONDHAM, NORFOLK NR18 9AH</b>	<b>0044 1953 603699 PHONE</b> <b>0044 1953 607201 FAX</b> <b>sales@hydraulics.uk.com</b>
--	--	--