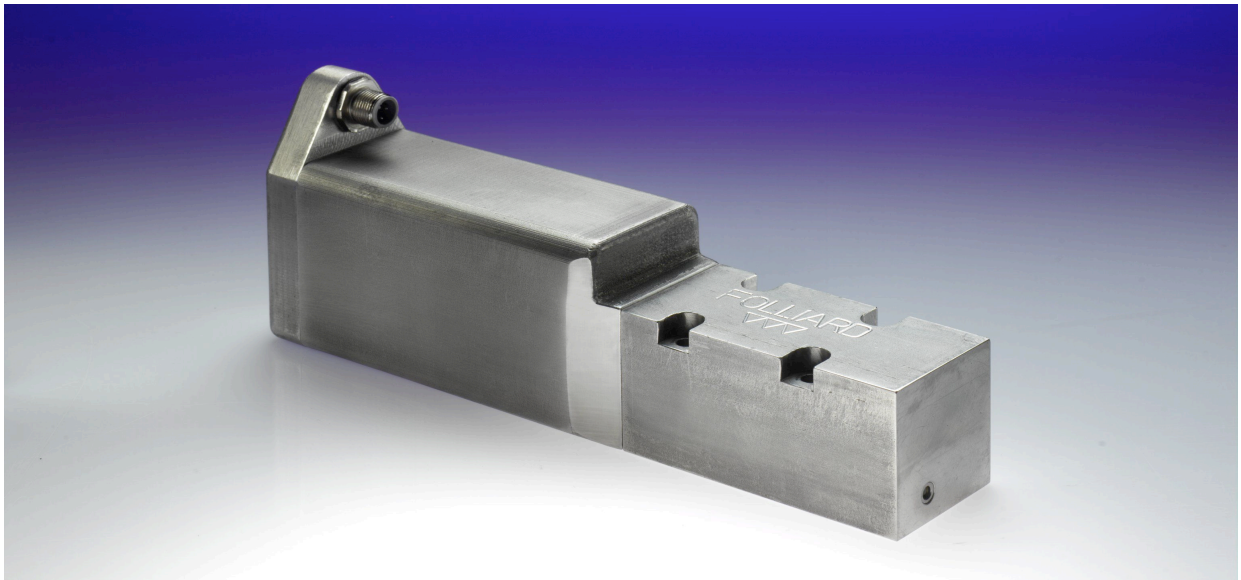


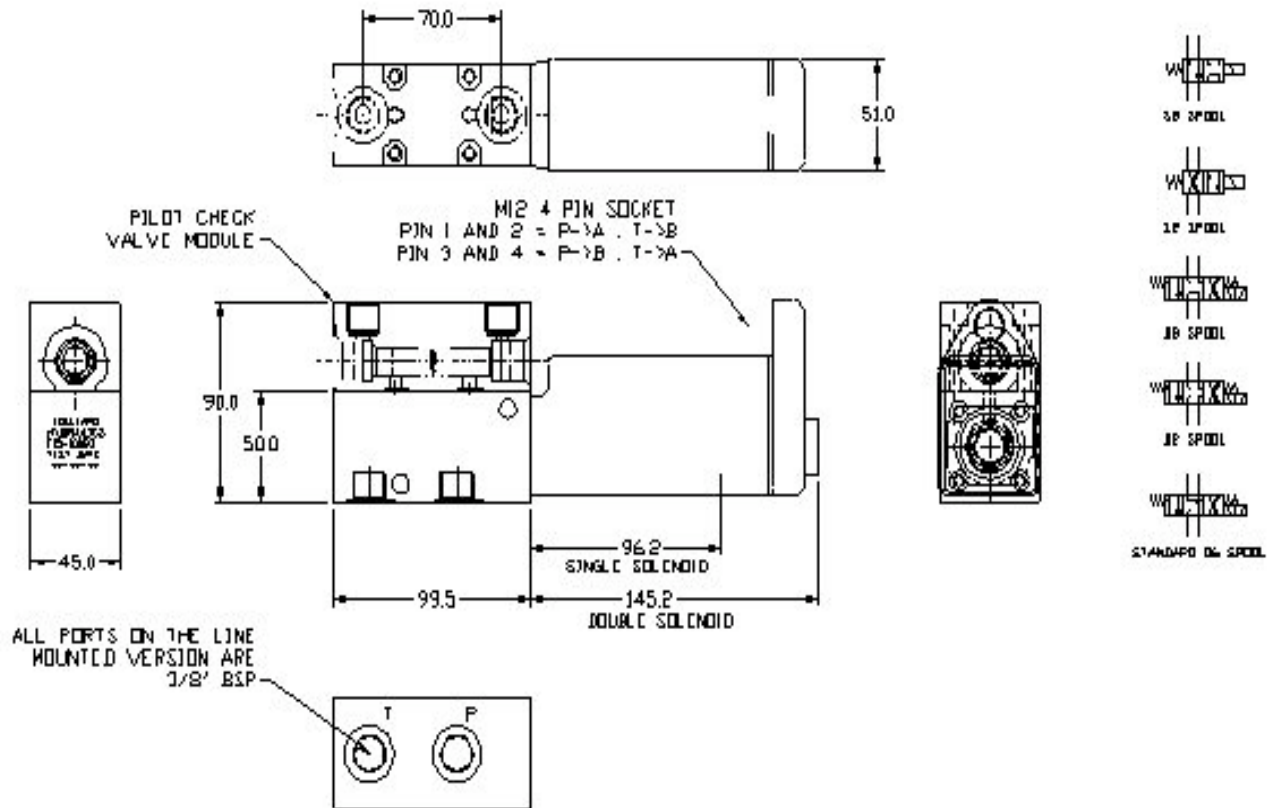
# STAINLESS STEEL AND ALUMINIUM SOLENOID VALVE

## General description

- These valves are used mainly for the control of hydraulic actuators in food processing, offshore and high humidity environments.
- All external materials are either 316 stainless steel or HE30TF hard anodised aluminium alloy.
- The valves can be supplied in a CETOP 3 format as shown below or as a pipe-mounted version complete with pilot operated check valves.



	With pilot check valves pipe mounted version	Without pilot check valves CETOP 3 version
Maximum pressure	Ports P, A & B = 210 bar Port T = 70 bar	
Temperature limits	- 30°C to +100°C	
Hydraulic fluids	Mineral oil Water glycol Synthetic (with reseat)	
Filtration	ISO 4406 Class 14/12 minimum	
Viscosity range	15 cSt – 46 cSt	
Flow rate (nominal) see graph	15 lpm	30 lpm
Weight	3.45 kg	3.18 kg
Port size	3/8" BSP	-
<b>ELECTRICAL DATA</b>		
Voltages available	12 or 24 V DC 115V AC 50/60 Hz	
Wattage (Per coil)	20	
Duty cycle	100%	
Plug Detail	M12 4 Pin	



### Valve Options

- Stainless steel or aluminium alloy body.
- All ports closed spool
- All ports open spool
- P to T open, A and B ports closed.

